

# SOCIAL EMOTIONAL LEARNING

*Don't Be Fooled By The Title*

*Guide For Parents*

MOMS *for*  
★ LIBERTY ★



# 1 What Is It?

***Social Emotional Learning (SEL) is an educational method that focuses on emotions, identities, and ideological persuasion***

The organization that defines SEL is the *Collaborative for Academic Social and Emotional Learning* (CASEL). SEL required a systemic transformation that has significantly altered the teaching practices, discipline policies, counseling services, and school culture. The ultimate goal of SEL is to shift the values, beliefs, attitudes, and worldviews of students. The goal is to psychologically manipulate students to accept the progressive ideology that supports gender fluidity, sexual preference exploration, and systemic oppression.

## ***What does SEL teach?***

SEL uses a [framework](#) that addresses five competencies: *self-awareness, self-management, responsible decision-making, relationship skills, and social awareness*. These seemingly innocuous skills are very deceptive to most people. The problem is these skills are delivered to students through an “equity lens” aka the viewpoint of someone who believes America is systemically racist & oppressive.

## ***What do advocates say?***

People who support SEL make unsubstantiated claims that it teaches students to learn empathy, build relationships and manage their emotions. CASEL claims SEL improves academic and behavioral outcomes, is a wise financial investment, and teaches students to manage their emotions positively.

## ***How do you argue the advocates talking points?***

SEL has been in most public school districts since 2016 and one effective way to discredit the method is to collect data & research. Gather the proficiency statistics on your school district or state and compare the results over the last 10 years. Many schools are seeing a rapid decline in proficiency since the focus has shifted from academics to ideology with SEL. Additionally, [reports](#) are showing a massive increase in adolescent mental health reports with the implementation of SEL. Lastly, SEL is a massive money maker for companies that produce school resources on the taxpayer’s dime. It is estimated that by 2025, it will be a [3.5-BILLION-dollar market](#). CASEL claims SEL gives an 11 to 1 return on investment while ignoring that academics, behaviors, and mental health is declining rapidly. Calculate the money spent on SEL at your school, district, or state levels and combine the amount with other declining statistics to expose the fraudulent claims from SEL advocates.

# 2 Framework & Programs

***The people who control CASEL ultimately control our education system.***

**SEL** is defined by [CASEL \(Collaborative for Academic Social Emotional Learning\)](#) and it claims to improve academic, behavioral, and social outcomes. CASEL is an organization that provides a national framework for the implementation of SEL. Schools can choose from over 100 SEL programs such as [Second Step](#), [Leader in Me](#), and [Character Strong](#).

## ***What's the problem?***

Since SEL programs follow CASEL's guidelines, updates, and framework; the people who control CASEL ultimately control our education system.

In 2016, most of the public education system was using CASEL SEL in some way. Once the practice had saturated the system, CASEL took advantage of this influence and moved the goalpost. The original definition of SEL used mostly innocuous language that sounded like skills most people want children to acquire such as managing emotions, achieving goals, making responsible decisions, and applying knowledge.

In 2020, CASEL announced the needs of students required [an "update" to the definition of SEL](#) aka moving the goalpost. The new definition made the agenda of SEL clear. The collectivist ([Marxist](#)) society that SEL seeks began to reveal itself by describing the updated version as a school-family-community partnership, addressing various forms of inequity, and contributing to just societies.

SEL programs follow CASEL's updates whenever they decide to shift their guidelines, vision, and mission. Another problem with SEL programs is that they are extremely deceptive. Many SEL programs use different terminology to identify the goals and competencies taught, however, they all follow the CASEL framework. This scheme has made it difficult for parents to realize they are all the same.

## ***What is the SEL framework?***

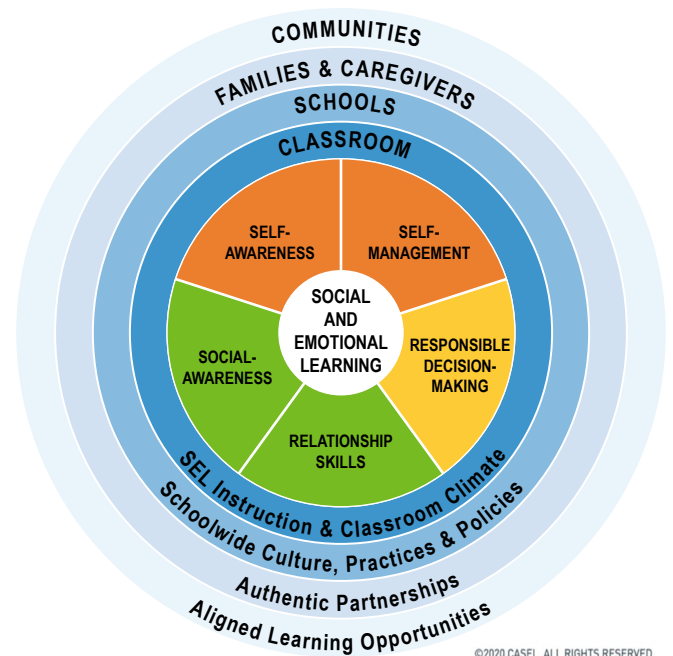
[CASEL provides a framework](#) that creates the foundation for SEL implementation. The framework has five competencies they claim SEL will teach children to make them more successful in life. The competencies are self-awareness, self-management, responsible decision-making, relationship skills, and social awareness. Additionally, the framework has four outer rings: classrooms, schools, family and caregivers, and communities. The broad scope of impact is because SEL is being used to create systemic change in society.

## What is the problem?

Although the SEL framework appears to be well-meaning, the deceit is within the delivery of these competencies. SEL teaches children to adopt the skills through an “[equity lens](#)” aka the viewpoint of a critical race theorist. The purpose of SEL is to change the consciousness (attitudes, values, beliefs, morals, and worldview) of the children to view America as a society that gives privileges to some and oppresses others. It is a 12+ year brainwashing program to create “agents of social change” who will dismantle the “inequitable systems” (America).

## The Process:

- **Self-Awareness:** Identify your race, socioeconomic status, gender, sexuality, and group identity. Then use your identity to determine if you are a privileged member of society or oppressed.
- **Self-Management:** Use mindfulness practices, neuroscience therapy, and groupthink exercises to control your emotions as you transition to a new set of social norms.
- **Responsible Decision-Making:** Make decisions based solely on if your identity qualifies as privileged or oppressed and what is best for the group (collective) priorities.
- **Relationship Skills:** Learn how to build personal relationships with people you don't agree with because of “Mob Rules” (rule/control by a group of people through intimidation and fear of retaliation).
- **Social Awareness:** Training to become a social justice warrior who will work to disrupt and dismantle America.



## What can you do?

- **Break the Code** — Educate your community on the real meaning of the innocuous language used with SEL.
- **Research the SEL program your school uses** and expose the radical agenda. For example, Second Step uses [National Equity Project](#) as a resource for schools through the program.
- **Attend all school board meetings** and stop any contracts or grants that extend the use of SEL programs.

# 3 Trauma Informed

***Mental health practice aimed at helping children from trauma, now used by SEL to manipulate.***

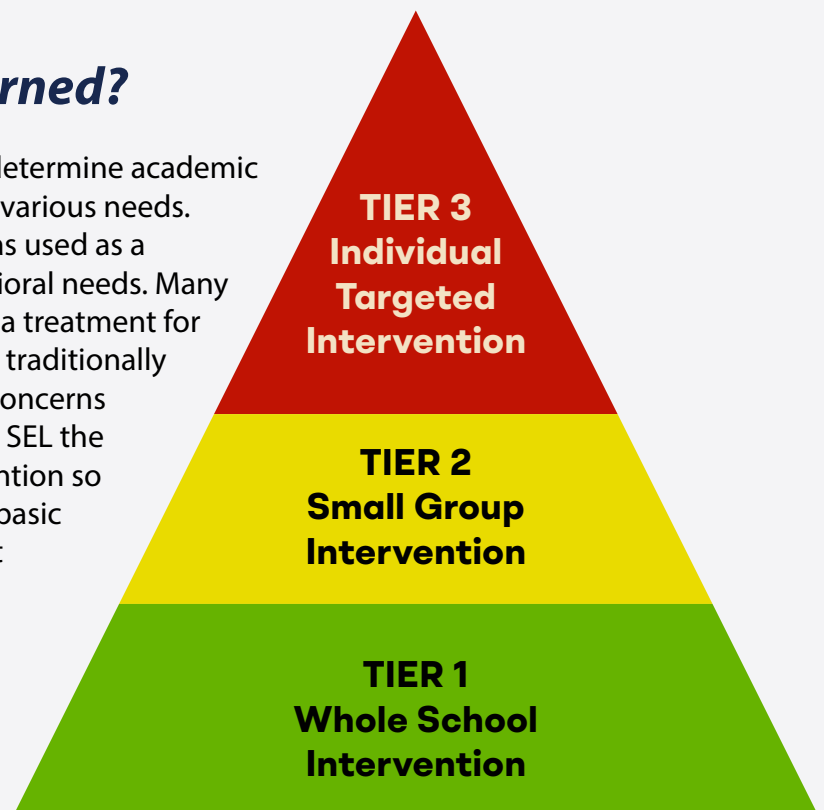
**S**ocial Emotional Learning (SEL) is a “trauma-informed” mental health practice designed to psychologically manipulate participants into the desired mindset. Typically, when people think of a child who has legitimately been impacted by trauma, they think of individual circumstances such as severe neglect, abuse, sudden loss, etc. However, when SEL was implemented into the education system advocates expanded the definition of trauma to include historical trauma such as slavery (or what they perceive as systemic racism/oppression) and intergenerational trauma (trauma passed down through generations).

## ***What is the problem?***

Trauma-informed SEL includes “systemic racism/oppression” as a legitimate cause of trauma, it justified placing every single student into Tier One of a Multitiered System of Support (MTSS). Most parents do not realize SEL automatically placed their child into a mental health intervention program. Trauma-informed care should be used to support specific individual needs such as for foster care children, refugees, or victims of sexual or physical abuse. It should not be used as a groupthink intervention.

## ***Why should you be concerned?***

MTSS is a framework that helps educators determine academic and behavioral strategies for students with various needs. Before the implementation of SEL, MTSS was used as a support for individual academic and behavioral needs. Many people don’t realize MTSS is used by SEL as a treatment for collective needs (groupthink.) For example, traditionally a child that displayed significant behavior concerns would be supported individually but under SEL the entire class must be involved in the intervention so they can learn to deal with it together. The basic premise is that the misbehaving child is not responsible for the behavior but society is.



**A**dditionally, the trauma-informed practices of SEL are meant to be proactive. This means universal screeners are used to psychologically profile children as a way to target “at-risk” students. School counselors, teachers, and administrators use the data from the screeners to implement increased interventions for anyone whom they determine may need additional mental health support. The universal screeners are often given to students as a questionnaire/survey and the questions can appear harmless.

One example of a universal screener question is “Do you ever worry?” The student would use a scale to indicate the extent that they worry. Depending on where the student ranks compared to the other students, they may be chosen to receive additional support. This could include group interventions or individual sessions with school counselors who support an extremely progressive ideology including gender fluidity and the sexualization of minors. Incredibly, school counselors have the power to determine if withholding this information from the parent is in the best interest of the student.

## ***What can you do?***

- ***Opt your child out of all screeners, questionnaires, and surveys.*** It is common for parents to miss the announcement that these are being given so do not wait, [stop the data mining of your child](#).
- ***Help spread this information and educate your community*** on the truth about this radical agenda.
- ***Work with legislators to stop the data mining*** and mental health treatment of children without parental consent.

WHAT CAN YOU DO?

# 4 Teaches Critical Race Theory

*Social Emotional Learning (SEL) Teaches Critical Race Theory (CRT)*

***The idea that America is systemically racist/ oppressive and this status quo is maintained to sustain a white supremacy dominant culture.***

In a nutshell, [Critical Race Theory](#) is the idea that America is systemically racist/oppressive and this status quo is maintained to sustain a white supremacy dominant culture. People who believe this theory work to [destroy America](#) by exposing what they believe is racism/oppression in every situation. This ideology uses [identity politics](#) (race, gender ideology, sexual preference, socioeconomic status, etc.) to divide people into groups of oppressed vs. privileged. The praxis of CRT influences people to be against each other and America. In 2021, many states worked to ban the teaching of CRT in K-12 education, and some succeeded.

## ***How is CRT connected to SEL?***

Advocates for SEL argued that systemic racism/oppression was responsible for the achievement gaps and disciplinary discrepancies in education. The solution they proposed was SEL as a mental health intervention to create a [new consciousness](#) that would adopt the CRT viewpoint. SEL transformed the entire education system around CRT as objective truth (not theory).

## ***How does SEL teach CRT?***

Social Emotional Learning uses a method of instruction called [Culturally Responsive Teaching](#) (the other CRT.) This method filters lessons through a Critical Race Theory viewpoint to [purposefully engage students in conversations](#) that critique society as systemically racist/oppressive. Culturally Responsive Teaching was coined by Gloria Ladson-Billings, a self-proclaimed Critical Race Theorist, and activist. She explains that using this method develops a critical consciousness for students that challenge inequities (systemic racism/oppression) that institutions perpetuate.



Teaching to create a “critical consciousness” is a theory developed by [Paulo Freire](#), a Marxist, revolutionist who believed education was the way to advance the Communist agenda. Freire believed shifting the consciousness of the people would occur with an ongoing 3 step cycle:

- **Critical Analysis:** Creating knowledge about systems and structures that sustain inequity. In the classroom, teachers use real-life experiences of students that emphasize their socioeconomic differences and engage them in conversations around “fairness”.
- **Sense of Agency:** Developing a sense of power and capability. In the classroom, lessons require students to recognize, analyze, and change their viewpoints depending on how their identities impact society.
- **Critical Action:** A commitment to taking action against oppressive conditions. In the classroom lessons, used for activist training, build skills (resistance and compromise) that when applied will change society.

This method of teaching CRT is being used as part of the [SEL systemic change](#) to psychologically manipulate a student’s mindset. As a student continuously experiences this thought reform process, the lessons and culture influence the students to be “agents of change” (activists) and create a collectivist society where individual needs are subordinate to group needs (Socialism.)

## ***What Can You Do?***

- ***Educate your community*** on how SEL is teaching CRT to children.
- ***Meet with legislators*** to explain what Culturally Responsive Teaching is and how it is teaching children to adopt the CRT viewpoint which is hate-based, divisive, and anti-American.
- If you are in a state that banned CRT in education, reach out to some constitutional attorneys and see if they would ***help bring legal action against SEL.***

WHAT CAN YOU DO?

# GET SOCIAL

*and stay connected with us!*

@Moms4Liberty



*Sign up for our Newsletter*

[www.MomsforLiberty.org](http://www.MomsforLiberty.org)

**MOMS** *for*  
★ **LIBERTY** ★